



January, 2006

# Sandown North

## News



*From the desk of  
Jo Ann H. Georgian, Principal*

Dear Families,  
Our Monday Morning Meeting Sing-Along has put us all in the holiday mood. The children's excitement is contagious. We are so lucky to be working with your children at this fun-filled time of year. Monday Morning Meeting is shown regularly on Channel 17. I hope you get a chance to view our Sing-Along.

Additionally, the Holiday Gift Shop contributed to the air of excitement. The room was abuzz

with happy voices as children made decisions about the gifts they would buy for those they love. In the true spirit of the holiday, they were having fun "giving". Thanks to the volunteers who worked at the Holiday Gift Shop, coordinated by Jeanne Lanctot and Lorraine Beucler. The children were provided with an experience they will not soon forget.

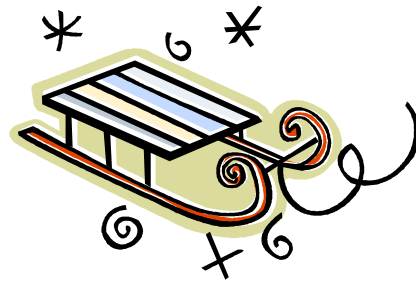
Thanks, also, to Chris Russell and Brenda Merrill, PTA Co-Presidents, for all their hard work to make the Annual Auction such a success. The generosity of many folk is sincerely appreciated. The children will be provided with enriching opportunities not otherwise possible.

Thanks are also extended to Rick Smith, father of Shelby, one of our former students. Once again, he delivered a beautiful, very large wreath to us for our main

entrance. It is so nice of him to think of us every year. The children "oohed" and "aahed" when they first saw the wreath on the building. We so appreciate Mr. Smith's thoughtfulness.

As you complete your holiday shopping please remember that the children need warm clothing so they can enjoy outdoor recess. I reviewed the rules with children at Monday Morning Meeting. In a nutshell: To play in the snow, children must wear hats, mittens/gloves, snow pants and jacket, and boots. Without snow pants, they will play on the hot-top. They often try to negotiate with the staff, as some don't like to take the time to put on snow pants, especially when there is not much snow on the ground. Clothing gets wet and uncomfortable even in a small amount of snow; so appropriate clothing is a necessity. Please help your children by reminding them to bring outerwear to school.

I wish you all a joyous holiday season, filled with family, friends, and much happiness.



## Curriculum Corner



Nancy Barcelos

January 9<sup>th</sup> is an important evening in our school. Jeannene Mason, educational consultant representing Everyday Math, will be here to speak to parents about the math program. As you know this is the new curriculum the Timberlane School system has adopted. Teachers are working very hard to implement this program. Your child is receiving a minimum of 60 minutes of math daily. The effect of this focused instruction has been positive. Students are working on challenging concepts and are developing strategies to problem solve. We feel our students will be better prepared to compete in the world market when they grow up.

We strongly urge you to take advantage of this wonderful

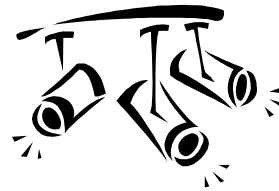
opportunity to hear Ms. Mason speak. She is an accomplished educator and brings many years of experience and wisdom. This is an open invitation to all parents in the Timberlane District. We will be meeting at Sandown North at 7pm. Invite your neighbors, especially if you know they will have a child attending elementary schools in the Timberlane District. Come, listen and learn!

## Reflections 2006

PTA is sponsoring the **Reflections** Program once again this year. All students are welcome to participate! This year's theme is "**I wonder why...**" Create a piece of **artwork**, take a **photo**, write a **song**, or write a **story** relating to this theme. All entries must be returned to the school library by January 18, 2006. All entries will be judged in the respective categories. Entry forms are available in the school library. Sandown North has had winners at the state level! Let's try again! See Nancy Barcelos if you have any questions.



## Spotlight on the Classroom

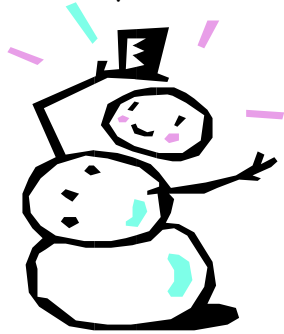


There is a winter forest growing outside of Mrs. Chauvette's classroom! Her second graders have created this realistic forest after researching and hours of using their artistic talents. They can tell you about conifers and deciduous trees. The trees are gorgeous to look at. How lucky we are to live in this part of the country; the landscape is picturesque.

Mrs. Zawacki's first graders have used their map skills to design "Gingerbread Town". They included buildings you would see in any community. I do have one question. Which street would be better to live on, Candy Cane

Street or Chocolate Lane? That's a tough one!

The march of the penguins is on! Mrs. Difeo's scientists are researching penguins. They have painted life size penguins. They can be seen marching in the hall toward the 'inside forest'! What a fun way to study life sciences.



## FROM THE SCHOOL COUNSELOR

This has been a busy month in school as I'm sure it has been at home as well.

This month the Star Quest behavior we are working on is "Including Others".

For my monthly guidance lessons, I worked with the children around this idea of inclusion. Some of our 3<sup>rd</sup> graders helped come up with

the phrase, "You can't say, 'You can't play.' "

In the 1<sup>st</sup> and 2<sup>nd</sup> grade classrooms, we talked about how we can include others and did an activity that illustrated what it feels like when children are excluded. We talked about the meaning of the word "empathy".

The 3<sup>rd</sup> graders and I spent time talking about what makes us unique. We used the analogy of a wrapped present. From the outside a gift might have pretty wrapping, but we can't tell just by looking at the wrapping, what's on the inside. It is the same with people. Each of us has our unique wrapping on the outside, but it doesn't tell us about the person on the inside. By including others, making new friends and watching their behavior, we can learn more about each other. It helps us to get along better if we remember that people are all different on the outside and the inside. We can be different and still be friends and classmates. We ended the activity by the children seeing the inside of the wrapped gifts I brought them. Ask your child about the gifts and how they looked on the outside and inside. 😊

If you have any questions about these activities or our school's elementary guidance or counseling program, please feel free to contact me.

Enjoy the holidays!

Nancy Stafford, School Counselor  
887-8505 x317



**A Note from Marjorie Nelson  
String/Music Instructor**

Sandown North Third Graders who are studying violin, viola, or cello will perform in the Sandown Winter Concert at the PAC on Wednesday, January 11, 2006 at 7:00 p.m. They will join the string orchestra from Sandown Central that night, along with their band and chorus. What a musical group of third graders we have this year!



*Sandown North Family*

*Outing*

Manchester Monarchs vs.  
Providence Bruins

January 15, 2006  
Verizon Center, Manchester  
Tickets \$10.00 per person  
For more information call  
Kristen at 887.0428 or Sue at  
887.5264

**DATES TO  
REMEMBER:**

**December 24 – January 2<sup>nd</sup>**

Holiday Vacation   
Return to school January 3<sup>rd</sup>

**January 9 – Monday Morning  
Meeting at 9:00 am**

- Everyday Math Night at  
7:00pm

**January 12 – Public Hearing  
on the School District Budget at  
7:00 pm at Performing Arts  
Center**

**January 15 – Monarchs Outing**

**January 16 – Martin Luther  
King/Civil Rights Day  
NO SCHOOL**

**January 23** – Monday Morning Meeting at 9:00 am

**January 25** – Early Release at 1:00 pm

**January 30** – Monday Morning Meeting at 9:00 am

**HAPPY NEW YEAR**

